

IMPORTANT SAFETY AND INSTALLATION INSTRUCTIONS

WARNING: Risk of fire and electric shock. This product is to be installed by a qualified electrician only.

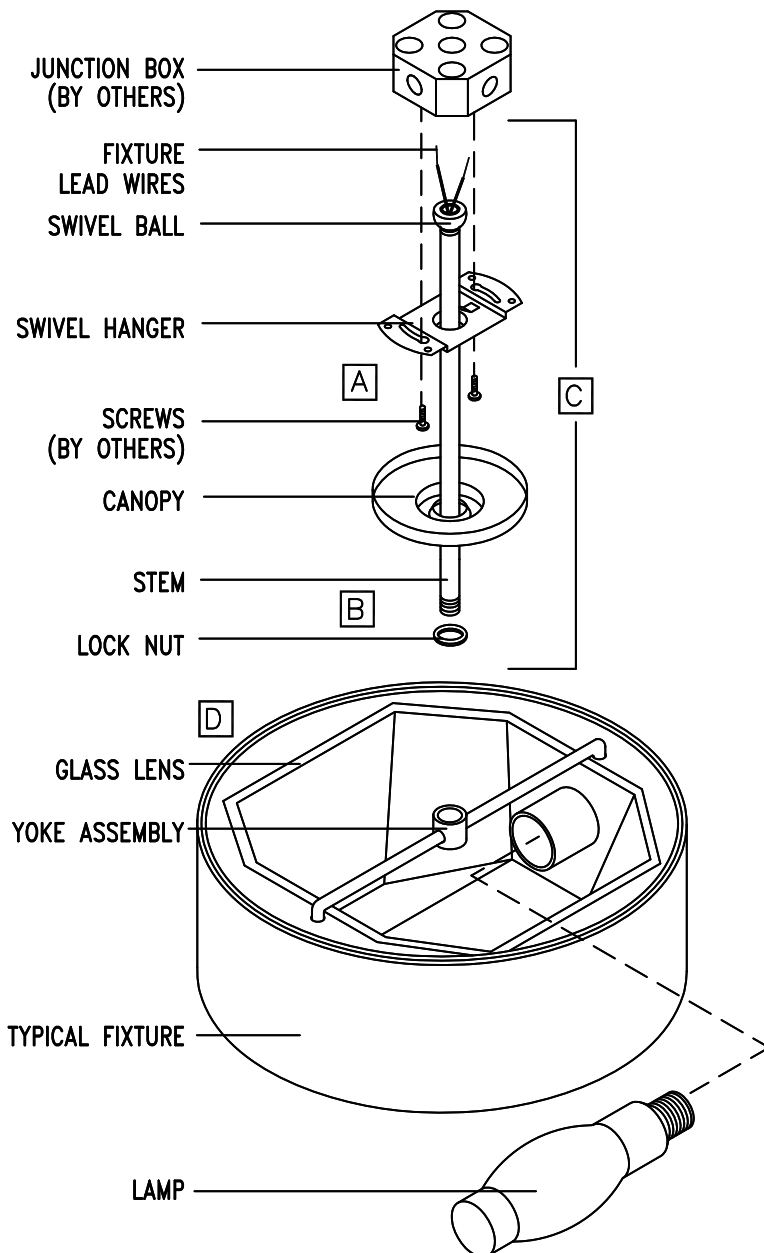
CAUTION: When using electrical equipment, basic safety precautions should always be followed including the following: Read all instructions carefully before installation and save

for future use. Make sure installation and all connections are in accordance with National Electrical Code and any local regulations. To avoid possible electrical shock, be sure that power supply is turned off before installing or servicing this fixture. Servicing should be performed by qualified service personnel.

USE coated metal halide lamps. These instructions do not claim to cover all details or variations. When additional information is desired, please contact your SPI representative.

SINGLE STEM CEILING SUSPENDED FIXTURES

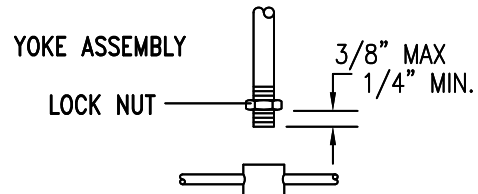
Support Structure must be capable of supporting 35 lb. fixture weight.



Fixtures provided with dual voltage ballast (120/277V) are wired for 277V.

See 800522 for remote mounted ballast/wiring.

- A** Assemble screws (by others) to ears of junction box (by others). Do not tighten.
- B** Feed wires through stem. Tighten stem into yoke or coupler with lock nut.



- C** Feed wires through these parts, assemble and thread stem into swivel ball. Twist lock swivel hanger to junction box and tighten screws.

Connect labeled lamp lead wires separately to each remote mounted ballast with wire nuts (by others).

Secure canopy by pushing upward to engage fastening device.

- D** Loosen lens retaining clips on lensed fixture. Remove glass lens. Install lamp which must be same as labeled socket and ballast. Install glass lens and re-tighten lens retainers.

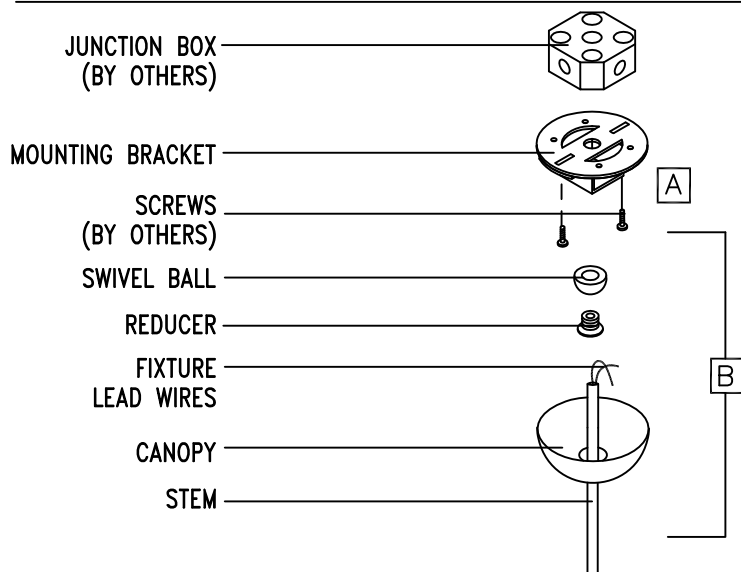
LAMPING NOTE:

Prior to dimming fluorescent lamps, operate lamps under normal conditions for 100 hours to prevent premature lamp failure.

12/3/13
IS1068X-A

SAM45 45 DEGREE SWIVEL CANOPY

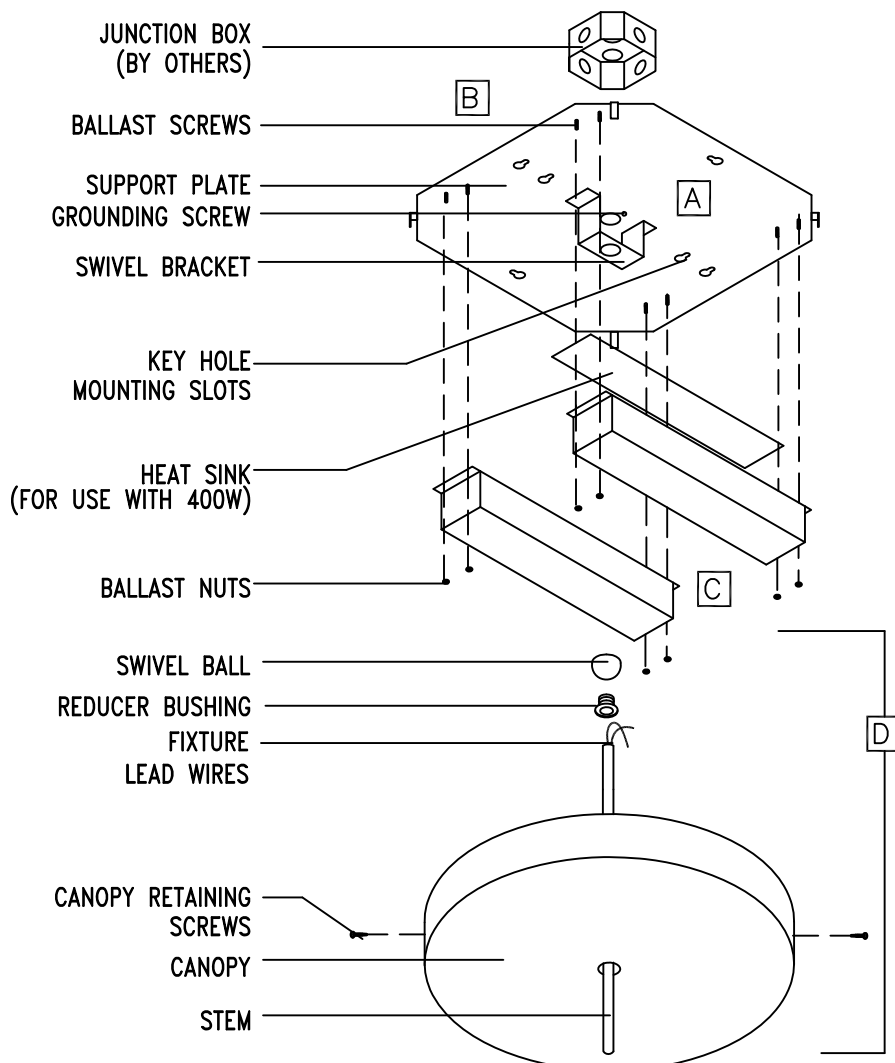
On sloped ceilings open side of bracket must be oriented toward upside of slope.
Remove and discard swivel on stem when provided.



- A** Mount bracket to ears of junction box with screws (by others).
- B** Feed wires through these parts and assemble.
Seat swivel ball groove into bracket tab.
Connect lamp lead wires to remote mounted ballast wires with wire nuts (by others).
Secure canopy by twisting to engage screws in bracket. Tighten screws.

BALLAST CANOPIES FOR NON-ACCESSIBLE CEILINGS

Support structure must be capable of supporting fixture and ballast weight.
Remove and discard swivel on stem when provided.



- A** Feed supply lead wires through support plate.
- B** Mount support plate to ceiling with screws (by others).
Note: Ballast mounting screws should be in support plate prior to mounting.
- C** Fasten ballast to support plate with nuts.
- D** Feed lamp lead wires through stem and assemble yoke, as shown on page 1. Feed these wires through these parts, lift stem/fixture up through swivel bracket and thread swivel ball/bushing to stem. Seat swivel ball groove into swivel bracket tab.
See 800522 for remote mounted ballast/wiring.
Secure canopy flush to ceiling with retaining screws.
For lamping installation see page 1.

HEAT SINK FOR USE WITH 400 WATT

Loosen four (4) ballast nuts, lowering ballast just enough to slide and center aluminum plate between ballast & mounting plate.
Tighten screws.

12/3/13
IS1068X-B